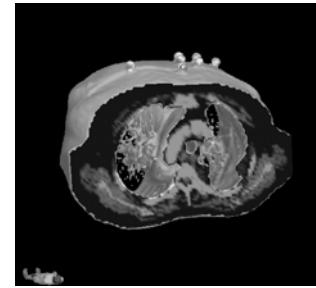


Scan Protocol (SRS/SRT) Extracranial



How to scan extracranial data for BrainLAB BrainSCAN / ExacTrac software*:

<p>FoV (Field of View) Scan Range</p>	<ul style="list-style-type: none"> • For the Reference-CT: make sure to include all Bodymarkers and the outer contour • Recommended: Restrict scan range (total table movement) to necessary length. Maximum scan length for ExacTrac 1.x and/or BrainSCAN 5.0 is 512 x Pixel-Size Maximum scan length for ExacTrac 2.x in combination with BrainSCAN 5.1 is 1024 mm
<p>Slice Thickness</p>	<ul style="list-style-type: none"> • Sequential Scans. The resulting slice thickness is determined by table increment (slice distance) • Spiral/Helical Scan: Reconstructed images are allowed. • Slice distance may be changed during the scan. Max. 3 mm recommended for critical regions
<p>Scan Properties</p>	<p>CT</p> <ul style="list-style-type: none"> • Axial only • Contrast chemicals allowed • Scan for soft tissue windowing (with Kernel of about 40). <p>MR</p> <ul style="list-style-type: none"> • Axial, sagittal, coronal (No reconstructions can be made from sagittal or coronal slices) • T1, T2, angiographic possible
<p>Gantry Tilt/Angulation</p>	<p>For the Reference-CT (with Bodymarkers): No angulation allowed, strictly 0°</p> <p>For all additional Scans (CT or MRI, to be fused to Reference Set): any angulation possible</p>
<p>Patient Orientation Position</p>	<ul style="list-style-type: none"> • Orientation “head first” or “feet first” • Strict supine if data shall be exported from iPlan RT Image to BrainSCAN. • Strict supine position for ExacTrac 1.x • Supine or prone position for ExacTrac 2.x. (you must maintain the same position for all sets acquired for the same patient)
<p>Scan direction</p>	<ul style="list-style-type: none"> • Cranial to caudal or caudal to cranial.
<p>Image/Pixel Size</p>	<ul style="list-style-type: none"> • Must remain the same during the scan.
<p>Table Height</p>	<ul style="list-style-type: none"> • Must remain the same during the scan.
<p>Image Compression</p>	<ul style="list-style-type: none"> • Save images in uncompressed format.
<p>Matrix Size</p>	<p>Squared recommended, e.g.:</p> <ul style="list-style-type: none"> • 512 x 512 • 256 x 256

* Based on PatXfer 4.21 or higher and BrainScan 5.0 or higher and ExacTrac 1.x or 2.x

* If you need additional information please contact your local BrainLAB Support Engineer