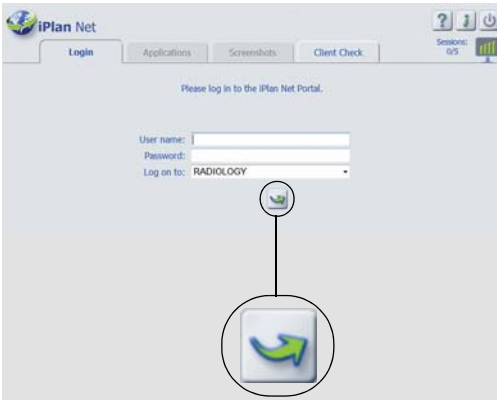


# iPLAN NET WORKFLOW

Software Versions: iPlan Net 3.x

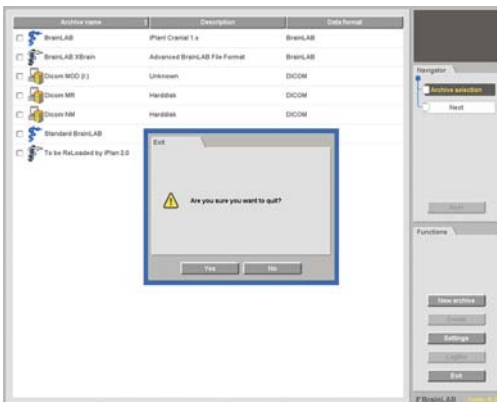


## STEP 1

- Open your browser.
- Enter the **iPlan Net** URL (e.g., https://iplannet).
- In the **Login** tab, enter your user name and password and click the **Login** icon.
- You are now connected to the **iPlan Net** portal.



**NOTE:** To access additional documentation, press the **Help** button at the top of the **iPlan Net Connection Portal**.



## STEP 2A (IF APPLICABLE)

- If data transfer is not integrated in your **iPlan** version, select the relevant **PatXfer** application, and proceed through the software to convert patient data from DICOM to Brainlab format.
- To exit **PatXfer** correctly, press **Exit** followed by **OK** in the dialog which appears.

**NOTE:** As only one user may use **PatXfer** at a time, exit **PatXfer** correctly after successful data transfer.



## STEP 2B (IF APPLICABLE)

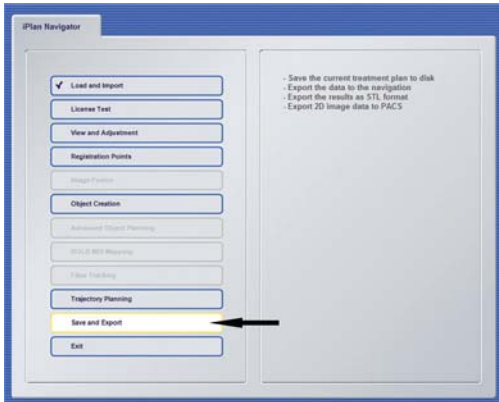
- Insert a USB flash drive into the USB port on the computer **before** opening **iPlan**.

**NOTE:** If you will export to a network location, you can skip this step and proceed to step 3.



## STEP 3

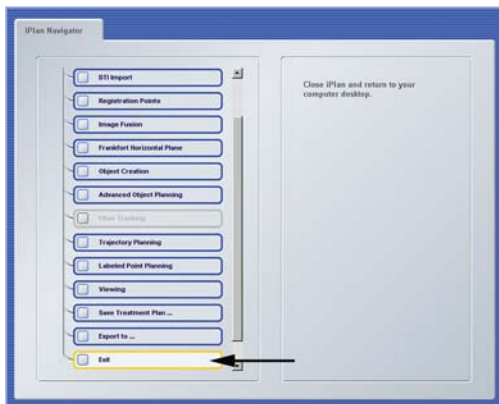
- Start **iPlan** by clicking on the relevant **iPlan** application button in the **Applications** tab.
- Perform relevant preoperative planning.



#### STEP 4 (USING INTERNET EXPLORER)

- Select your export location in the **iPlan** software and export your planned data.
- Wait for the data to transfer successfully.

**NOTE:** USB export is only possible with Internet Explorer. For HTML5-based connections using browsers other than Internet Explorer, you should export via the network to the end treatment device or storage location.

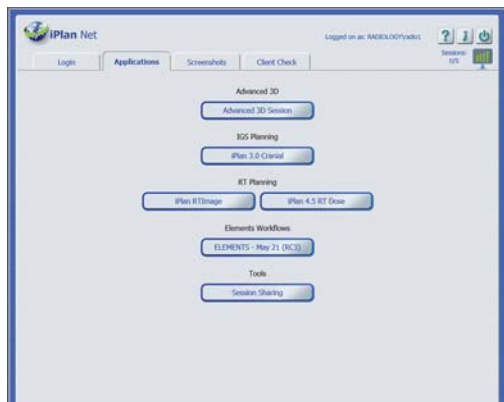


#### STEP 5

- Exit **iPlan** by selecting **Exit** in the **iPlan Navigator** (do not click X to close the window).
- Remove the USB flash drive from your computer (if applicable).
- Your planned data can now be used for patient treatment.

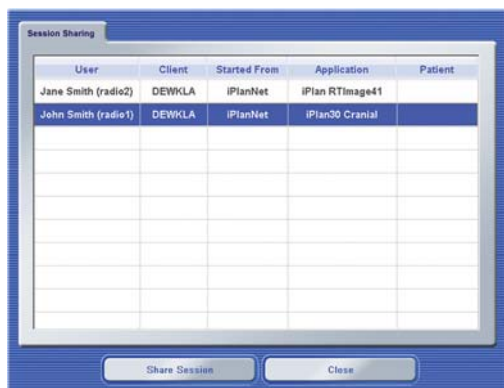
# SESSION SHARING

Software Versions: iPlan Net 3.x



## STEP 1

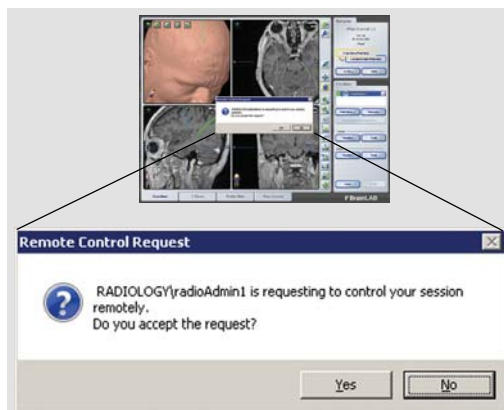
- Click **Session Sharing** in the Applications tab.



## STEP 2

- The **Session Sharing** dialog opens listing all active sessions.
- Select the required session and click **Share Session**.

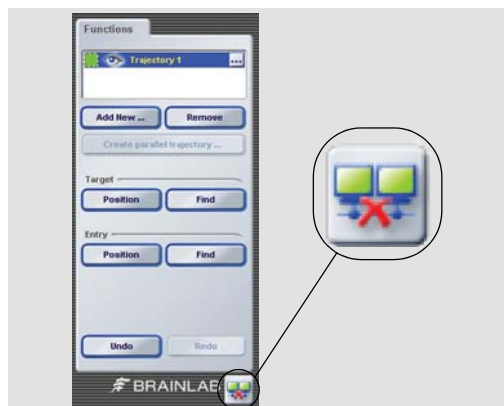
**NOTE:** Advanced 3D sessions are not listed and cannot be shared.



## STEP 3

- To accept session sharing, the session owner must click **Yes** in the authorization notification dialog.
- The selected session is opened.

**NOTE:** Both the session owner and the guest user can now use the software's full functionality and see all steps performed by the other user.



## STEP 4

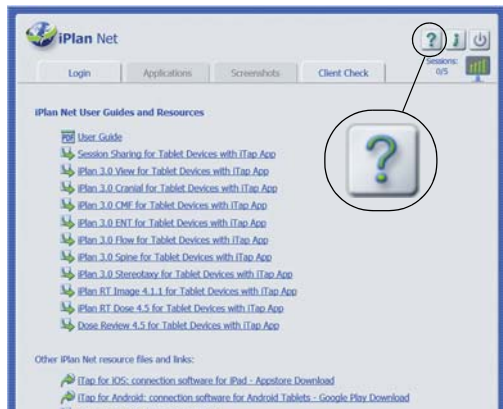
- To leave the shared session, click the **Disconnect** button at the bottom right of the screen.

**NOTE:** When you disconnect, the application does not close. You will simply leave the shared session.



# TABLET CONNECTIVITY

Software Versions: iPlan Net 3.x



## STEP 1

- Navigate to the **iPlan Net** Server using the web browser on the tablet device.
- Then, select the **Help** button as shown.
- Alternatively, enter the iPlan Net URL (e.g., <https://iplannet/help.aspx>)

**NOTE:** Wireless access to the server required.



## STEP 2 (DOWNLOAD iTAP APP)

- Download the **iTap** app, clicking on either:
  - **iTap for iOS: connection software for iPad - Appstore Download** or;
  - **iTap for Android: connection software for Android Tablets - Google Play Download.**

**NOTE:** The connection only supports tablet devices with a minimum display resolution of 1024x768. Therefore, use with smaller devices e.g., smartphones is not supported.



## STEP 3

- After downloading the **iTap** app, you need to create bookmarks.
- To do this, browse bookmarks by selecting the **Help** button as shown.

**NOTE:** You need to create bookmarks in order to store the application connections for later use.



## STEP 4

- Create bookmarks by tapping the link for the **iPlan** application you intend to use with your tablet (e.g., **iPlan 3.0 View for Tablet Devices with iTap App**).
- The bookmark is created.

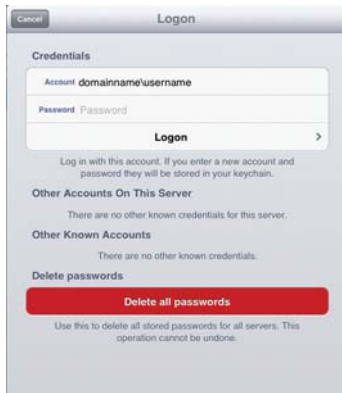
**NOTE:** Links/bookmarks can only start licensed applications on the server.



## STEP 5

- Start your desired application by selecting it from the menu of **Bookmarks**.
- Select **Connect**.
- The Logon window opens.

**NOTE:** For Android users, select **Bookmark** only.



## STEP 6

- Enter **Logon Credentials** for user name, password and domain (name).
- The selected planning application opens.



## ADDITIONAL INFORMATION

- To ensure safe and effective connection to **iPlan Net** the default settings should not be modified.

**NOTE:** Any changes to the predefined configuration are the responsibility of the end user.

**NOTE:** Modifying the screen resolution from its 32 bit default will result in inaccurate image quality.



## ADDITIONAL INFORMATION

**NOTE:** iTap is a 3rd party application. The user should refer to the manufacturer's user guide for further information and be aware that the interface may vary with future versions.

### MANUFACTURER INFORMATION:

Brainlab AG  
Kapellenstr. 12, 85622 Feldkirchen, Germany  
Europe, Africa, Asia, Australia: +49 89 99 15 68 44  
USA and Canada: +1 800 597 5911  
Japan: +81 3 3769 6900  
Latin America: +55 11 33 55 33 70  
France: +33-800-67-60-30

E-mail: support@brainlab.com

### COPYRIGHT:

This guide contains proprietary information protected by copyright. No part of this guide may be reproduced or translated without the express written permission of Brainlab.

Document Revision: 1.0  
Article Number: 60910-85EN

### LIABILITY:

This guide is subject to change without notice and does not represent a commitment on the part of Brainlab.

For further information, please refer to the "Limitations of Liability" section in the Brainlab Standard Terms and Conditions of Sale.

