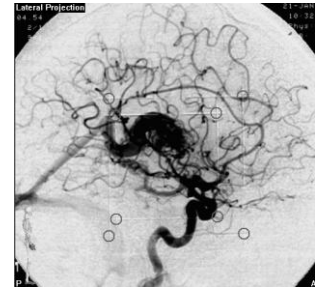


Scan Protocol (SRS/SRT) Angiography (X-ray)



How to X-ray Angiography data for BrainLAB BrainSCAN, iPlan RT Image and iPlan RT Dose software*:

FoV (Field of View)	<ul style="list-style-type: none"> • Include copper squares on localizer and region of interest (normally complete head) • Note: all Angiographic X-ray scans require the localizer
Directions	<ul style="list-style-type: none"> • One X-ray-set consists of: One lateral shot (from left or right) One frontal shot (from anterior or posterior) Recommended: note directions for planning personnel
Scan Properties	<ul style="list-style-type: none"> • Contrast chemicals recommended • Note: with BrainSCAN you can use up to 8 x-ray sets per patient (no limitation for iPlan RT Image)
Angulation	<p>As straight as possible (perpendicular to localizer)</p> <p>Reference: Smaller copper square (nearest to film) must be inside bigger copper square (nearest to source) – no overlap! Adjust while beam on.</p>
Image Transfer	<ul style="list-style-type: none"> • Digital (e.g. Dicom). • Printed on films: Each shot may not exceed size of max. A4 or U.S. Letter (unless Film Scanner installed on BrainSCAN Workstation allows bigger formats)
Image/pixel size	X-rays and corresponding DSA images must have the same size.
Matrix size	Any, but X-rays and corresponding DSA images must have the same matrix size.
Angio-Distortion Correction Module (optional)	Always mount the Angio-Distortion Correction Module facing to the Image-Intensifier.

* Based on PatXfer 4.21 or later and BrainScan 5.0 and iPlan RT Software 3.0 or later

* If you need additional information please contact your local BrainLAB Support Engineer