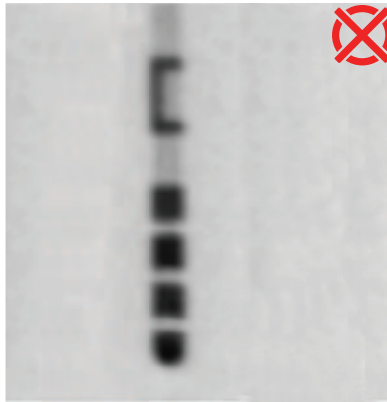
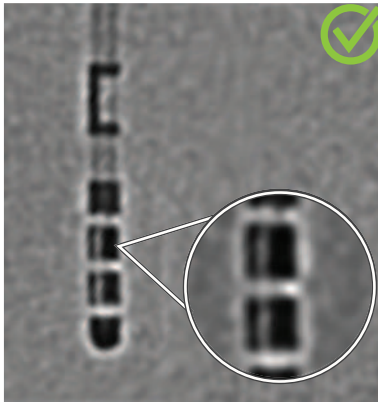


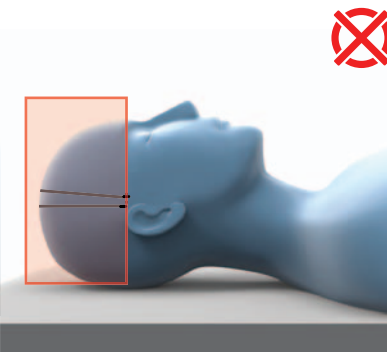
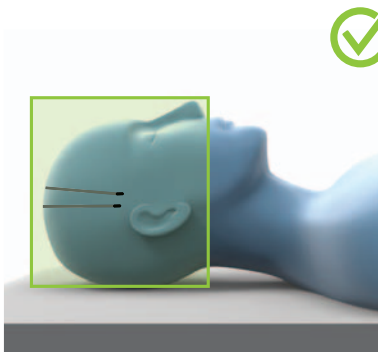
DBS LEAD LOCALIZATION ROTATIONAL FLUOROSCOPY SCAN PROTOCOL

Orientation of Boston Scientific directional DBS leads | Brainlab Elements Lead Localization



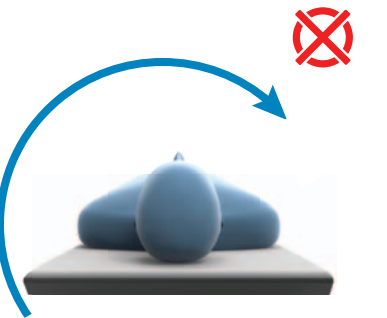
SPECIAL INSTRUCTIONS

- Ensure that the rotational fluoroscopy system has sufficient resolution to depict gaps between segmented contacts.
- Brainlab recommends performing rotational fluoroscopy after all brain shift has been resolved.



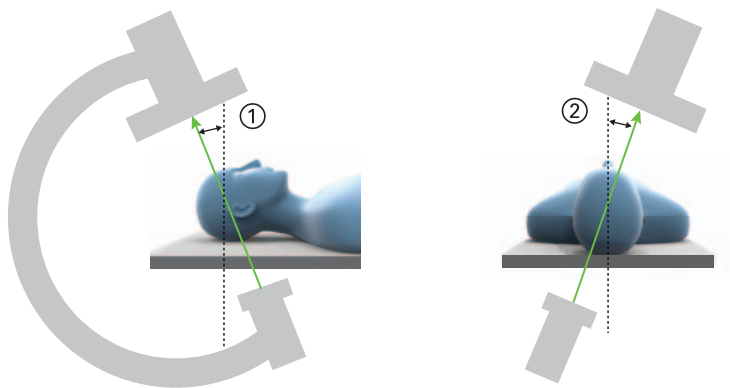
FOV

Cover entire part of the lead(s) inside the patient's skull as well as the skull base.



SCAN RANGE

Recommended scan range for rotational fluoroscopy is a minimum of 210°.



SYSTEM ALIGNMENT

A lead orientation extracted from 2D rotational fluoroscopy images can be transferred to a volumetric 3D image set by using a patient-specific plane of reference for both system alignment and transfer.

- ① Cranial/caudal angle
- ② Right anterior oblique/left anterior oblique

NOTE: For further information contact Brainlab support.

COPYRIGHT:

This guide contains proprietary information protected by copyright. No part of this guide may be reproduced or translated without the express written permission of Brainlab.

Document Revision: 1.0

Article Number: 60919-58EN

LIABILITY:

This guide is subject to change without notice and does not represent a commitment on the part of Brainlab.

For further information, please refer to the "Limitations of Liability" section in the Brainlab Standard Terms and Conditions of Sale.

